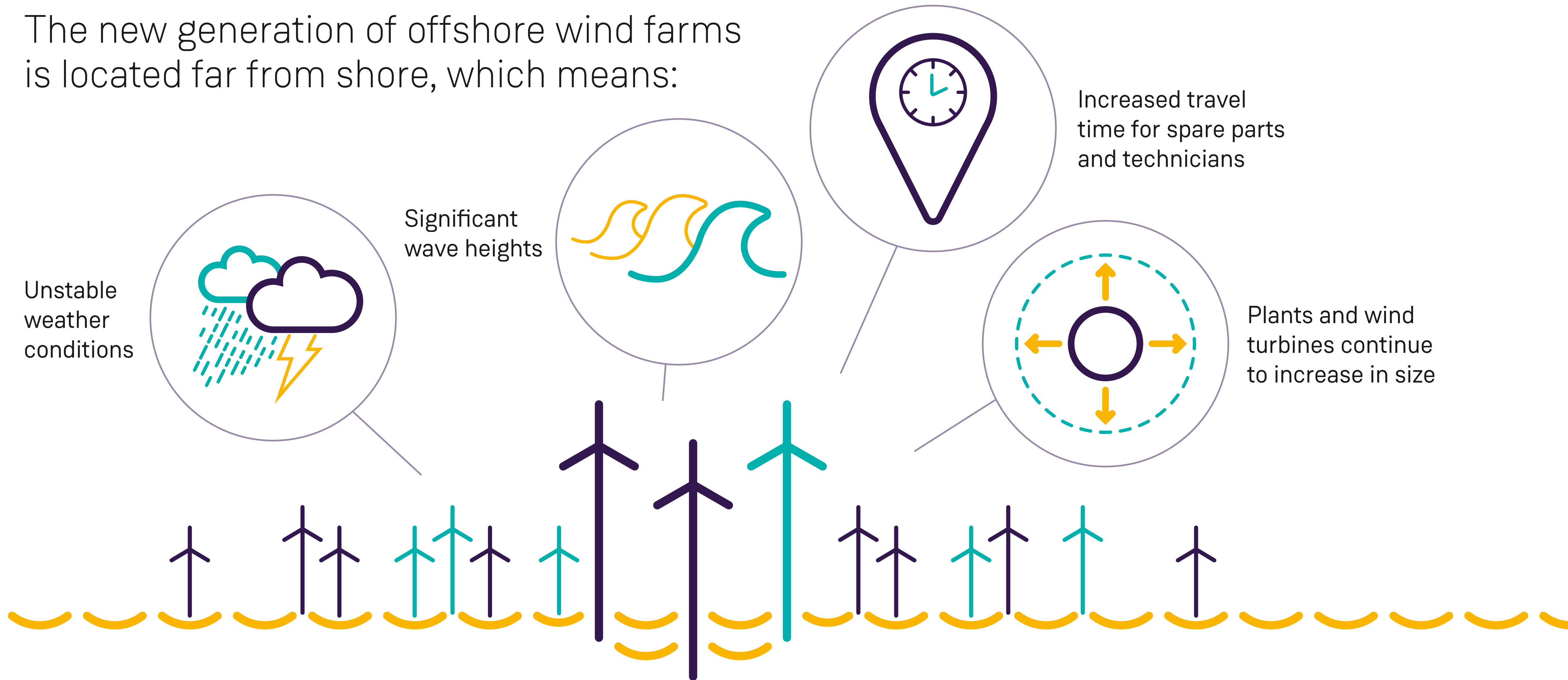


Integrated service  
logistics to overcome  
every offshore challenge.

# For maximum yield, overcome a sea of challenges.

The new generation of offshore wind farms is located far from shore, which means:



**SIEMENS Gamesa**  
RENEWABLE ENERGY



# Integrated service logistics are the solution.

## SOV

Floating warehouse and hub with walk-to-work turbine access

## Jack-Up Vessel

For heavy component exchange

## Helicopter

Fast service response in difficult weather conditions

## CTV

Flexible transport for diverse service tasks



**SIEMENS Gamesa**  
RENEWABLE ENERGY

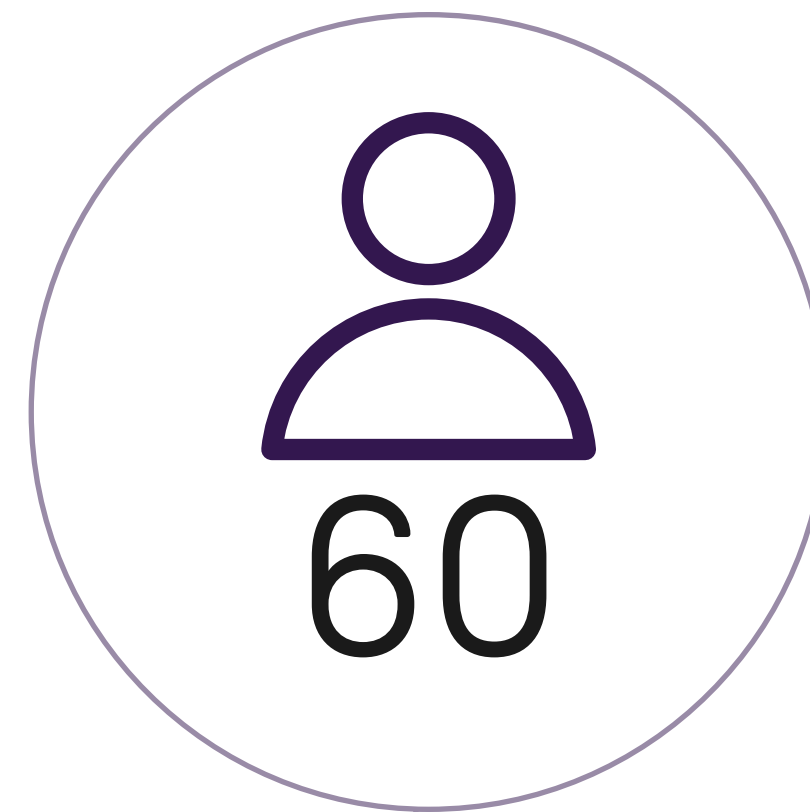
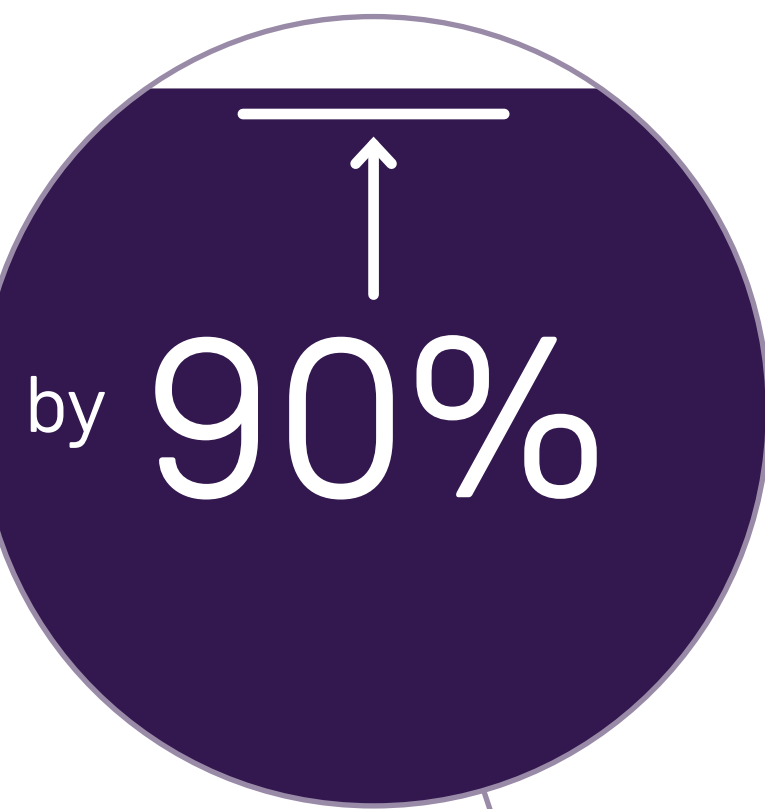


# SOV

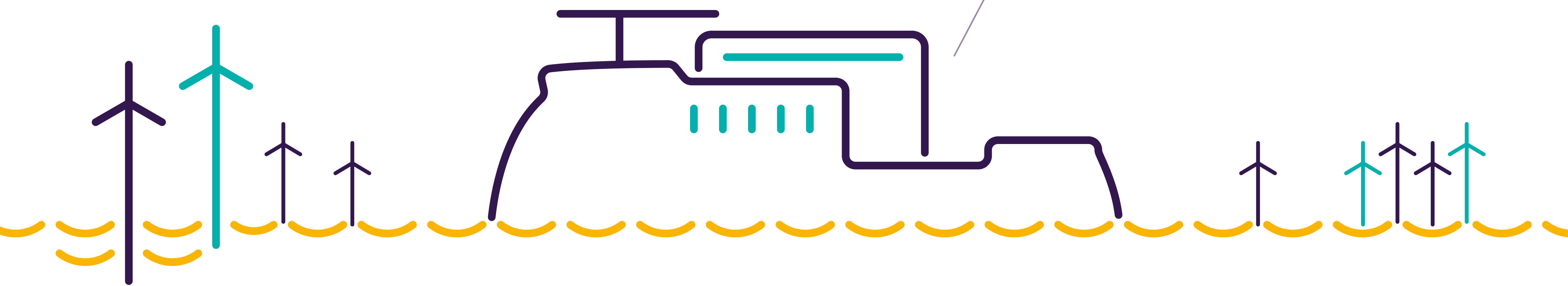
Service Operation Vessels (SOVs) are able to stay on-site for up to four weeks, for significantly diminished transport and transfer time. Innovative features make them the most effective way to service far-from-shore wind power plants.

60 people can live on board

Increases weather window for operations



420 m<sup>2</sup> warehouse for spare parts



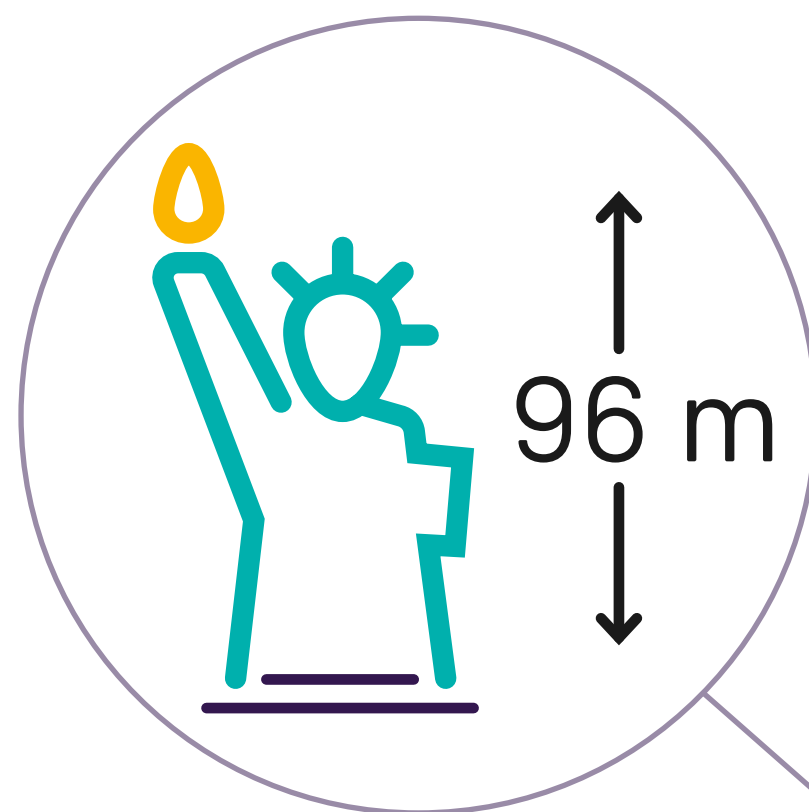
# Jack-Up Vessel

Jack-Up Vessels are self-elevating platforms used for complex heavy-lift tasks such as main bearing, gearbox, and blade exchanges - giving you peace of mind, whatever your asset size.

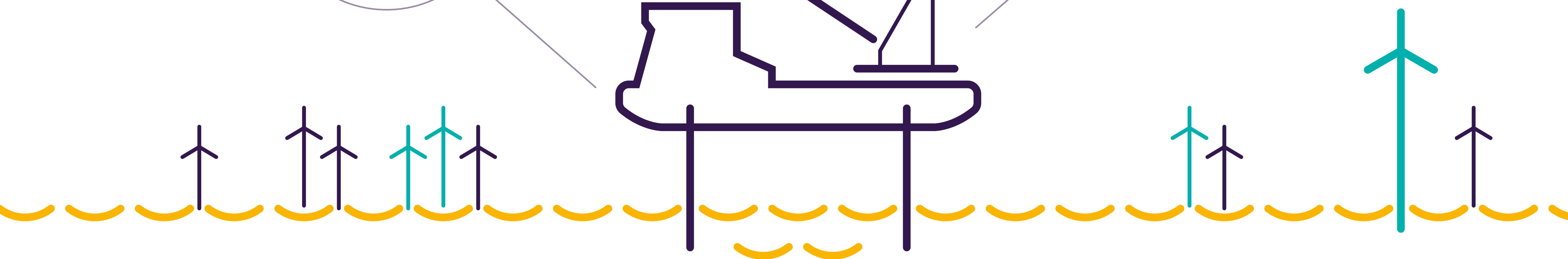
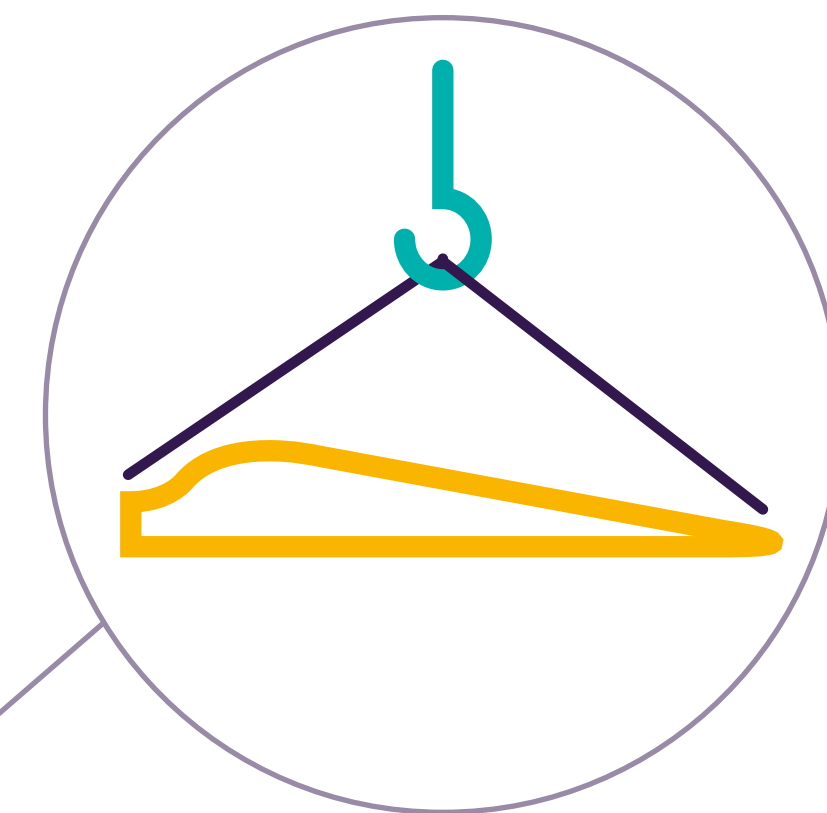
Can lift up to 400 tons



Lifting height above deck is 96 m



Heavy-lift operations can begin 2 weeks from contract confirmation

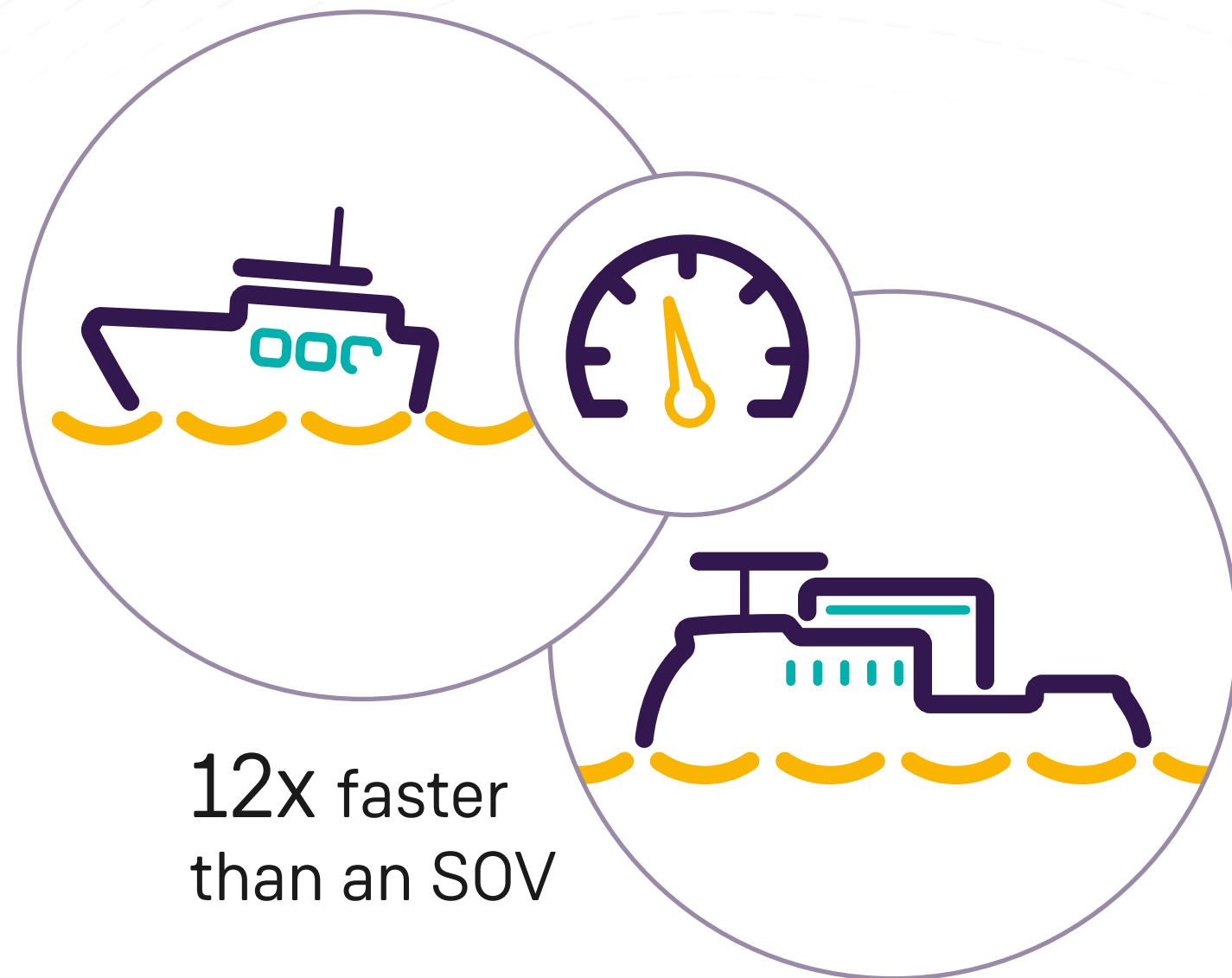


**SIEMENS Gamesa**  
RENEWABLE ENERGY

# Helicopters

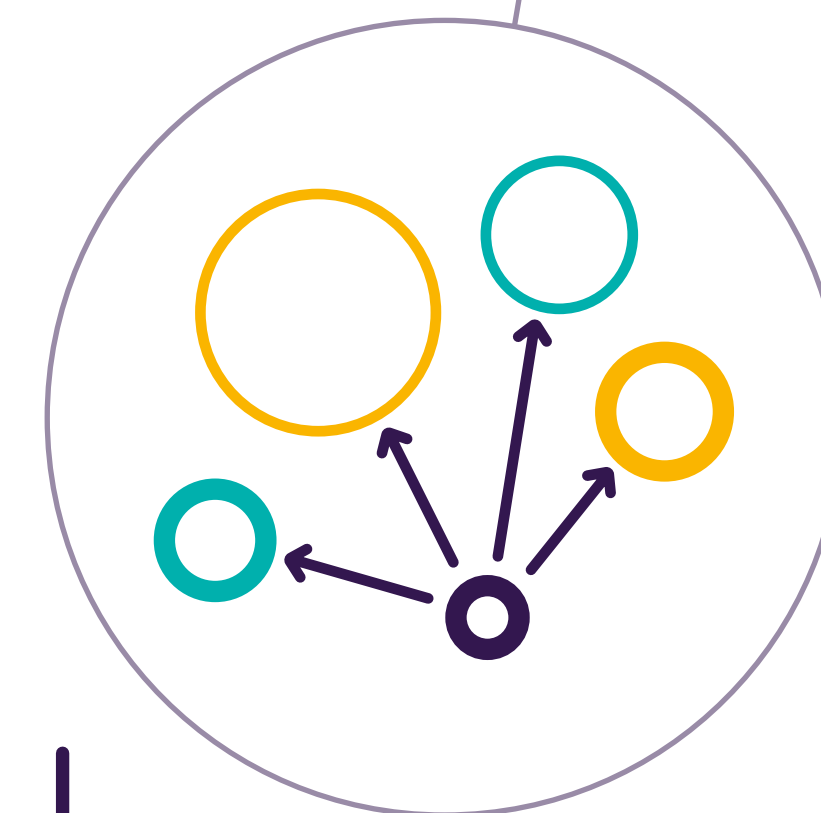
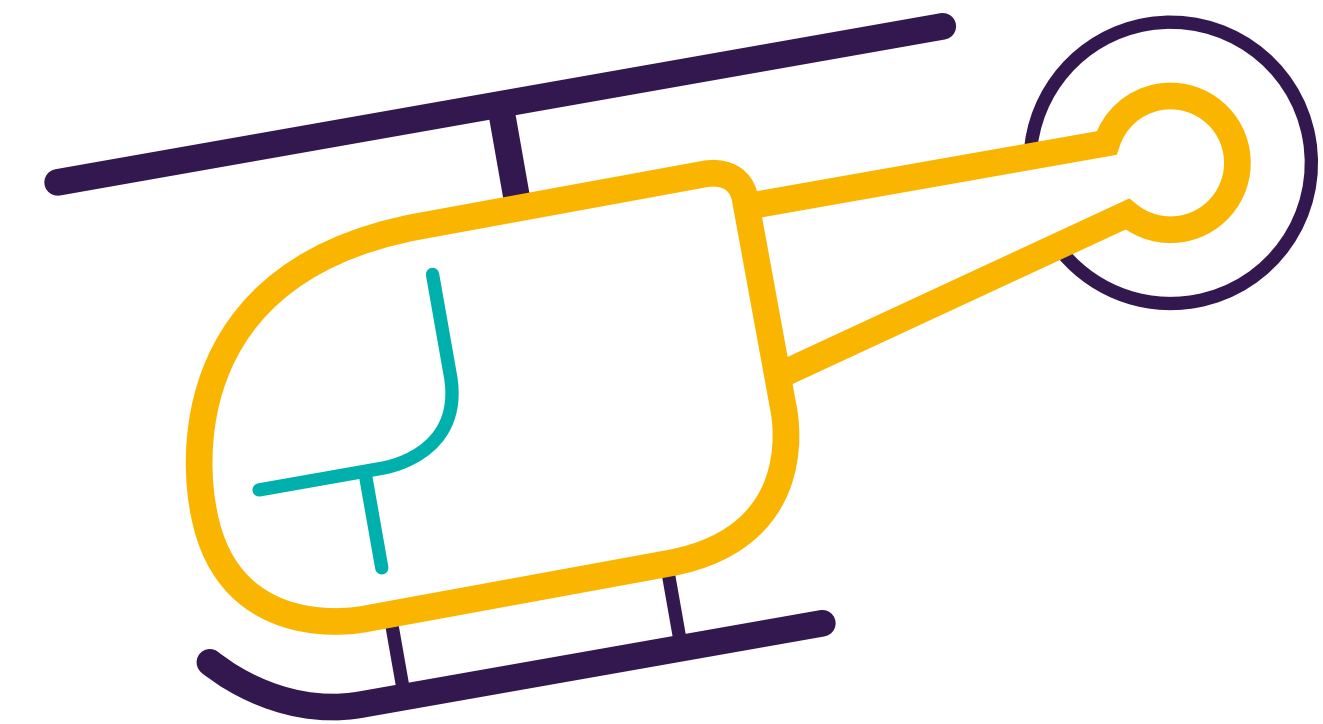
Helicopters are used with other vessels for fast and wave-independent transfers directly to the top of the turbine, and enable a range of useful service tasks, including the transfer of technicians or spare parts and tools.

6X faster than a CTV



12X faster than an SOV

Can operate in 88 km/h winds



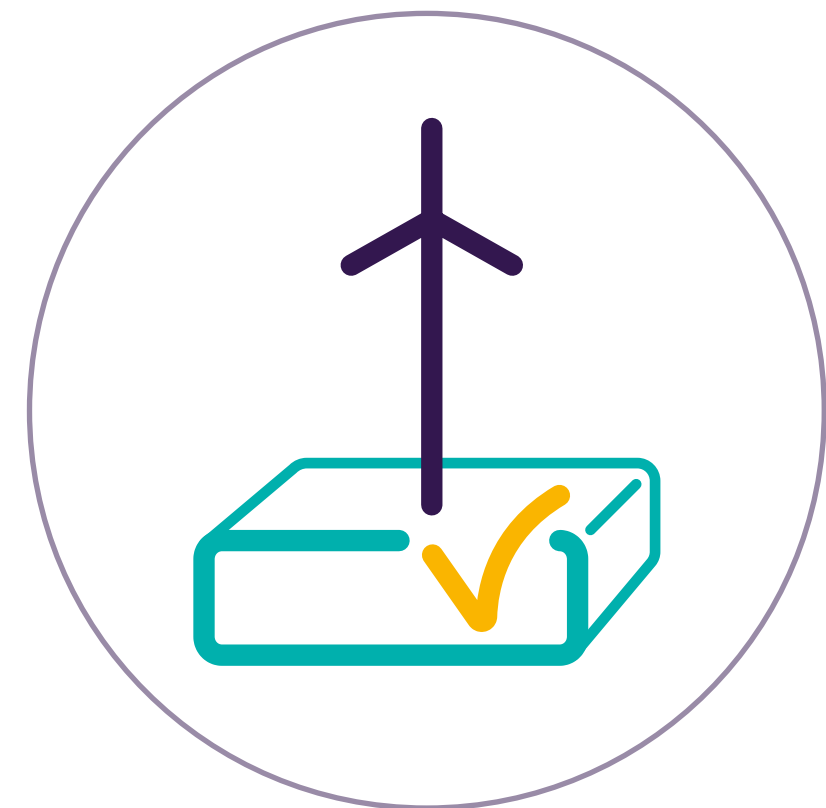
Versatile service ability



# CTVs

Used for a variety of service tasks including transfer and transport, Crew Transfer Vessels (CTVs) are multipurpose, high-speed vessels designed for wind parks closer to shore.

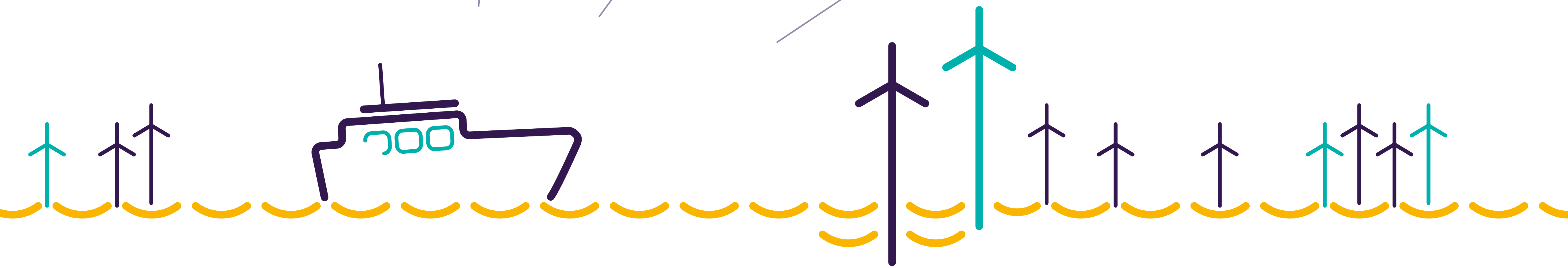
Backbone of offshore service



Continually updated tech



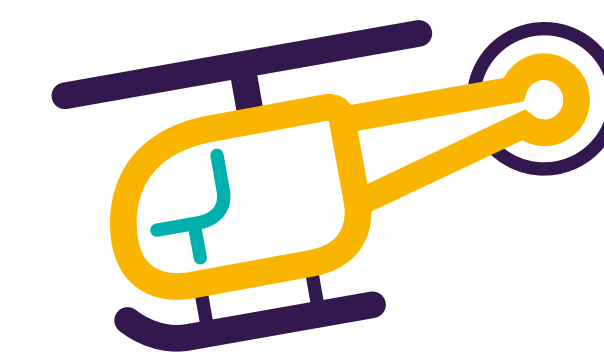
Versatile service ability



For further information on these logistics solutions, please don't hesitate to ask any of the Siemens Gamesa booth assistants.

Visit the Siemens Gamesa Renewable Energy site to learn more about the diverse range of reliable wind energy services that will optimize your assets.

[siemens.com/wind-service](https://www.siemens.com/wind-service)



**SIEMENS Gamesa**  
RENEWABLE ENERGY

